

# NIH: A Vision for the Future

2008 Budget Hearings  
House Appropriations Subcommittee  
on Labor/HHS/Education

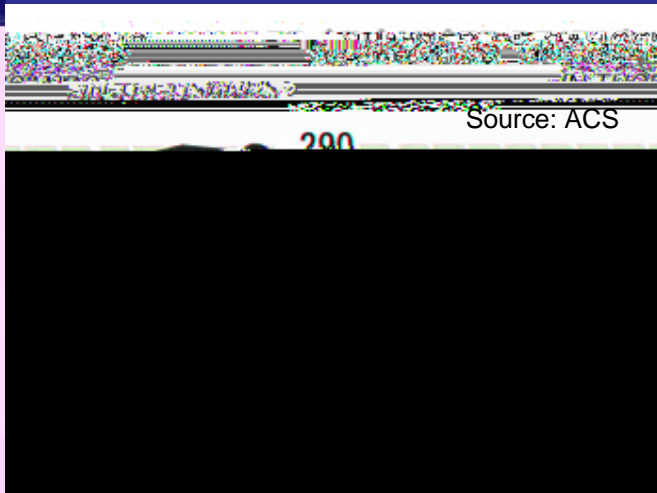
Elias A. Zerhouni, M.D.  
Director



# Due to Advances of Past 30 Years

## *Americans are Living Longer and Healthier*

For the second consecutive year, annual cancer deaths in the United States have fallen

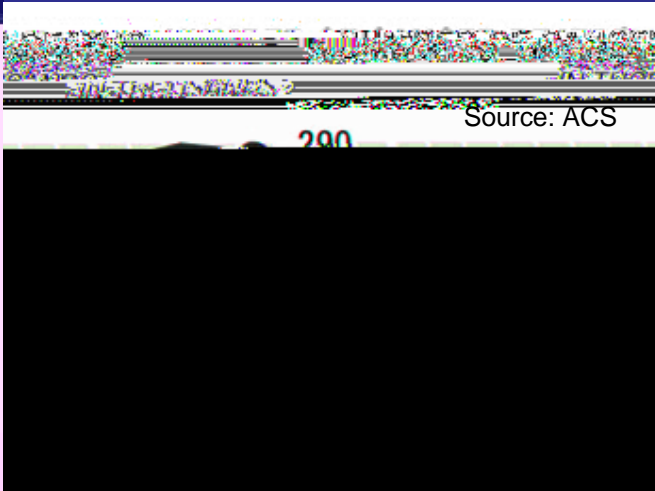


Cancer investment  
per American  
**~\$9/yr**  
1974-2004



# Due to Advances of Past 30 Years

## *Americans are Living Longer and Healthier*



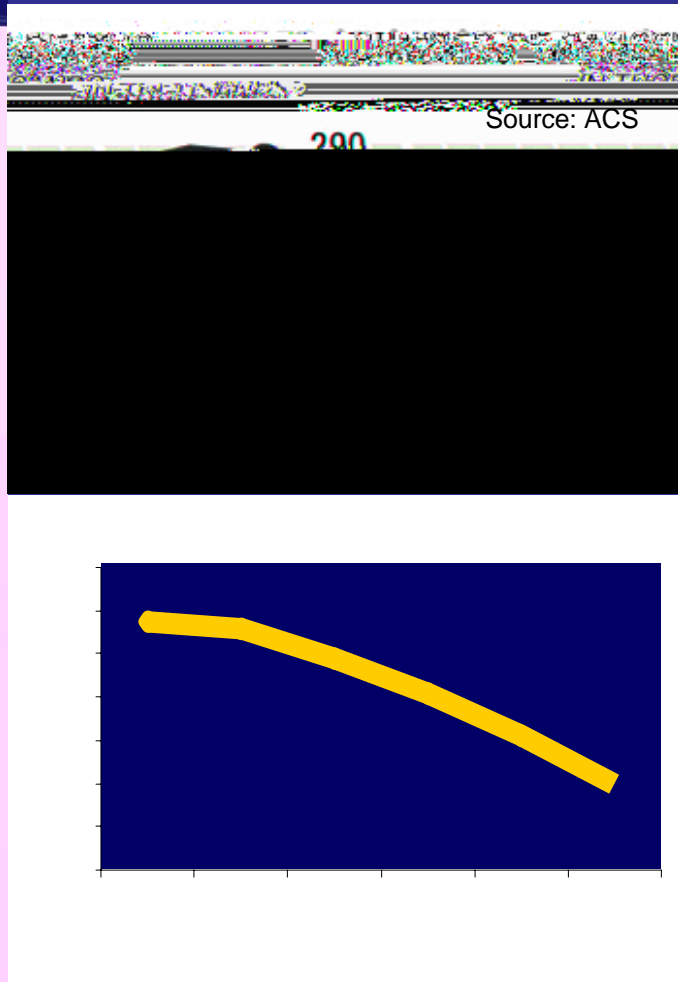
For the second consecutive year, annual cancer deaths in the United States have fallen

Over 60% drop in mortality for heart disease and stroke – in



# Due to Advances of Past 30 Years

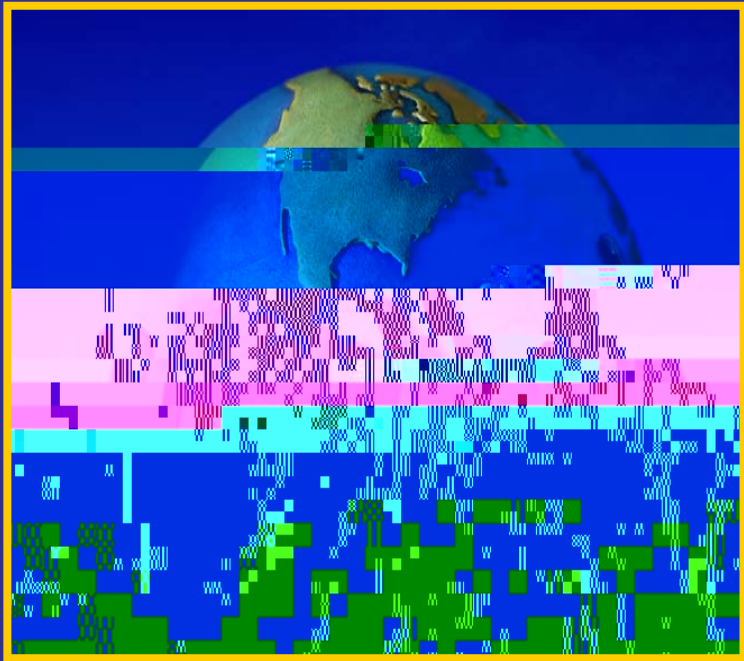
## *Americans are Living Longer and Healthier*



For the second consecutive year, annual cancer deaths in the United States have fallen

Over 60% drop in mortality for heart disease and stroke – in 2004, drop in deaths of women from Heart Disease from 1/3 to 1/4 reported

# Major Factors Will Force a Transformation of Medicine and Health



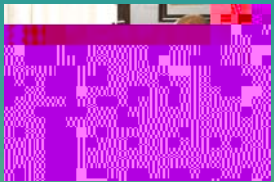
Socio-economics  
Demographics  
Landscape of disease  
Global health  
Scientific challenges  
and opportunities



# Evolving Public Health Challenges



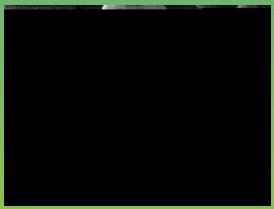
Shift from Acute to Chronic Conditions



Aging Population



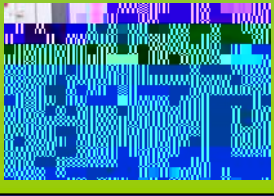
Health Disparities



Emerging and Re-emerging Infectious Diseases



Emerging Non-communicable Diseases - Obesity

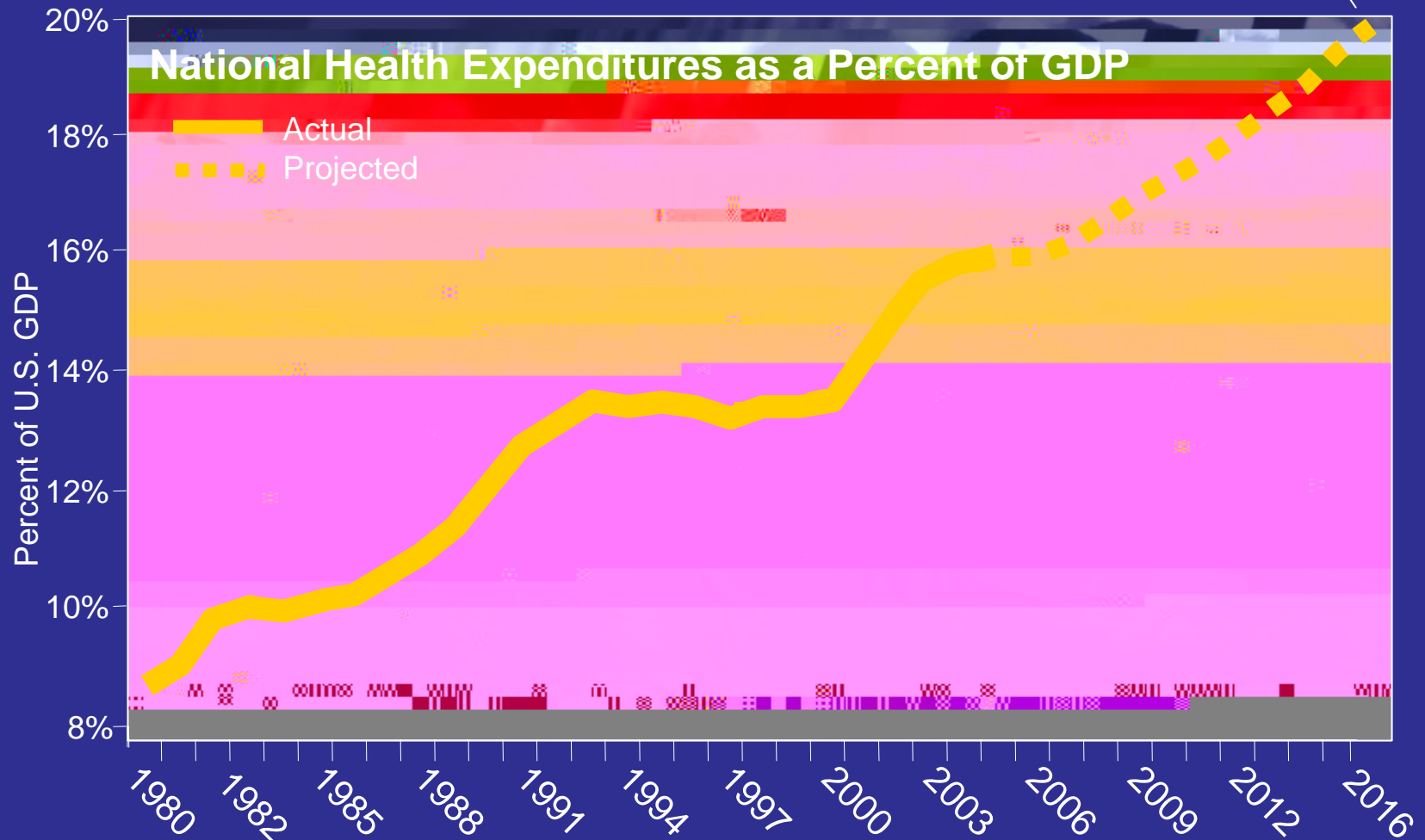


Biodefense

# Challenge of Rising U.S. Health Expenditures

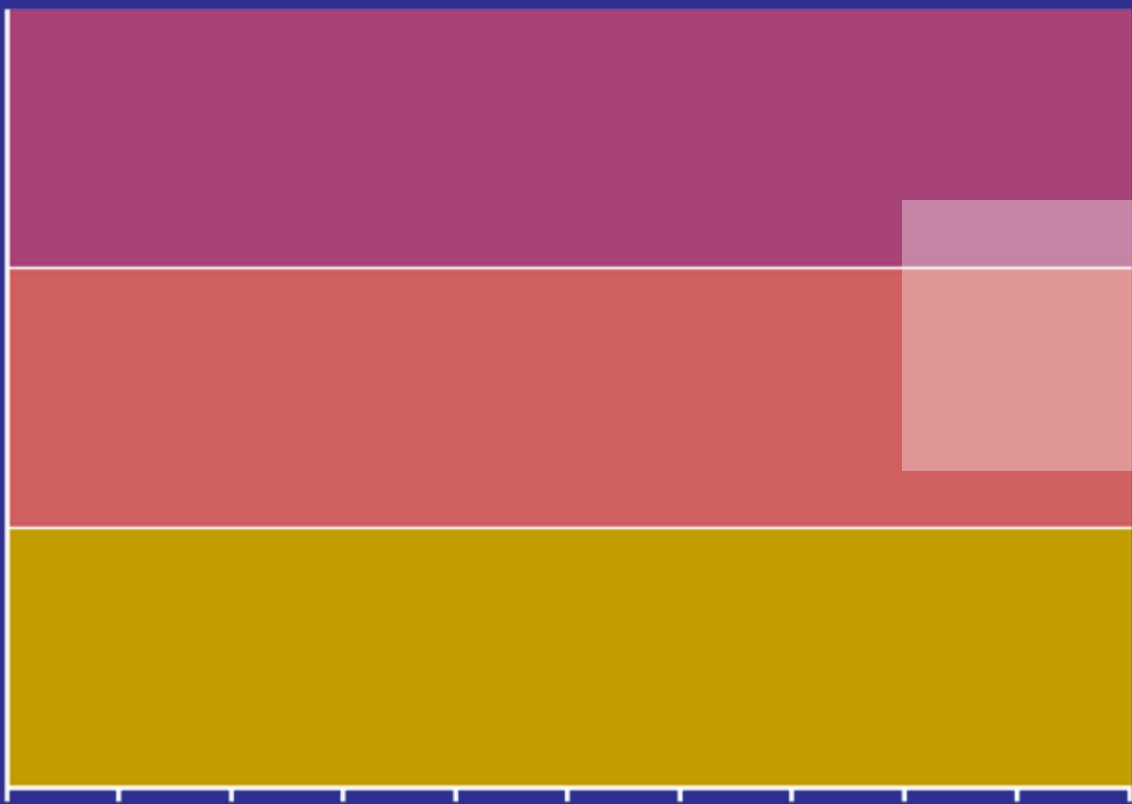
*Biomedical Research Must Deliver*

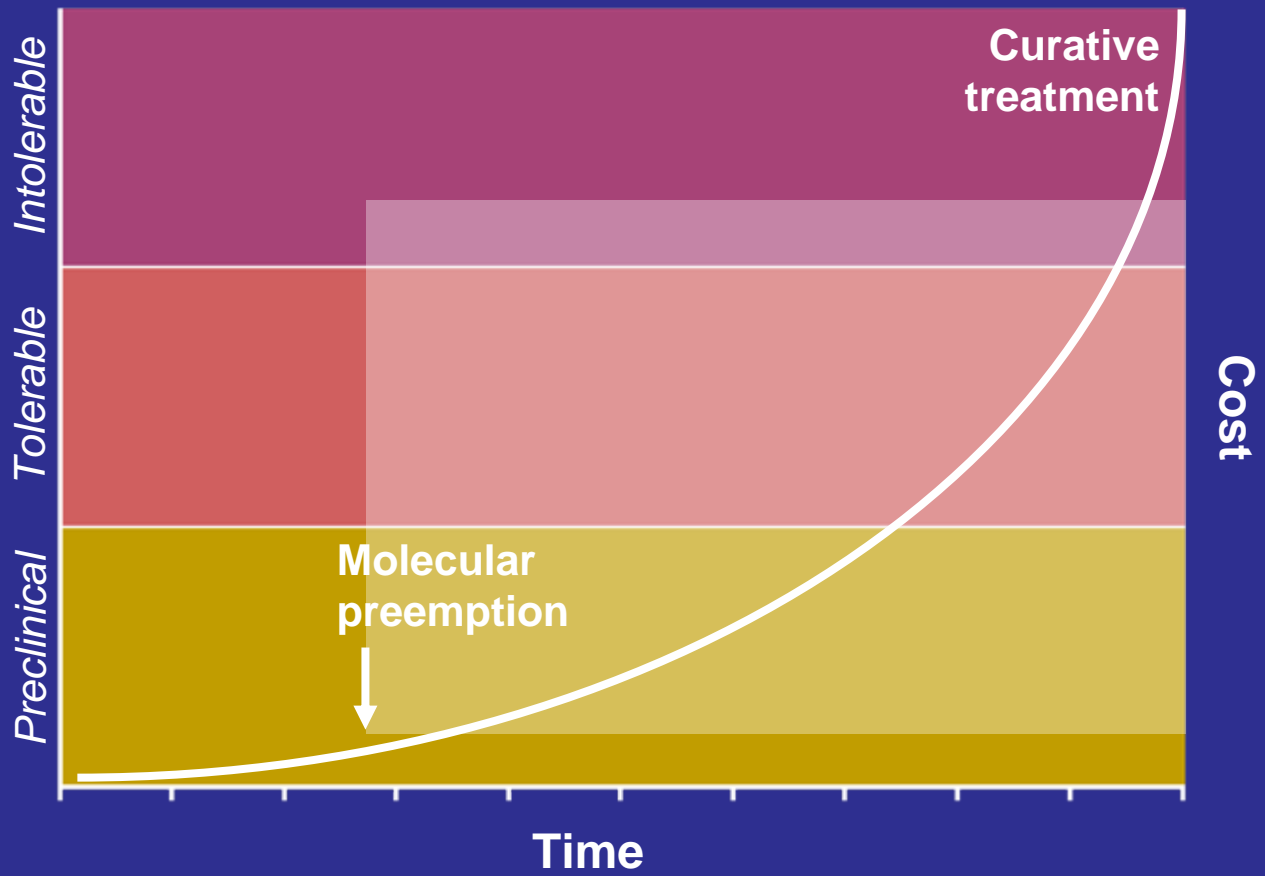
**\$4.1 trillion**









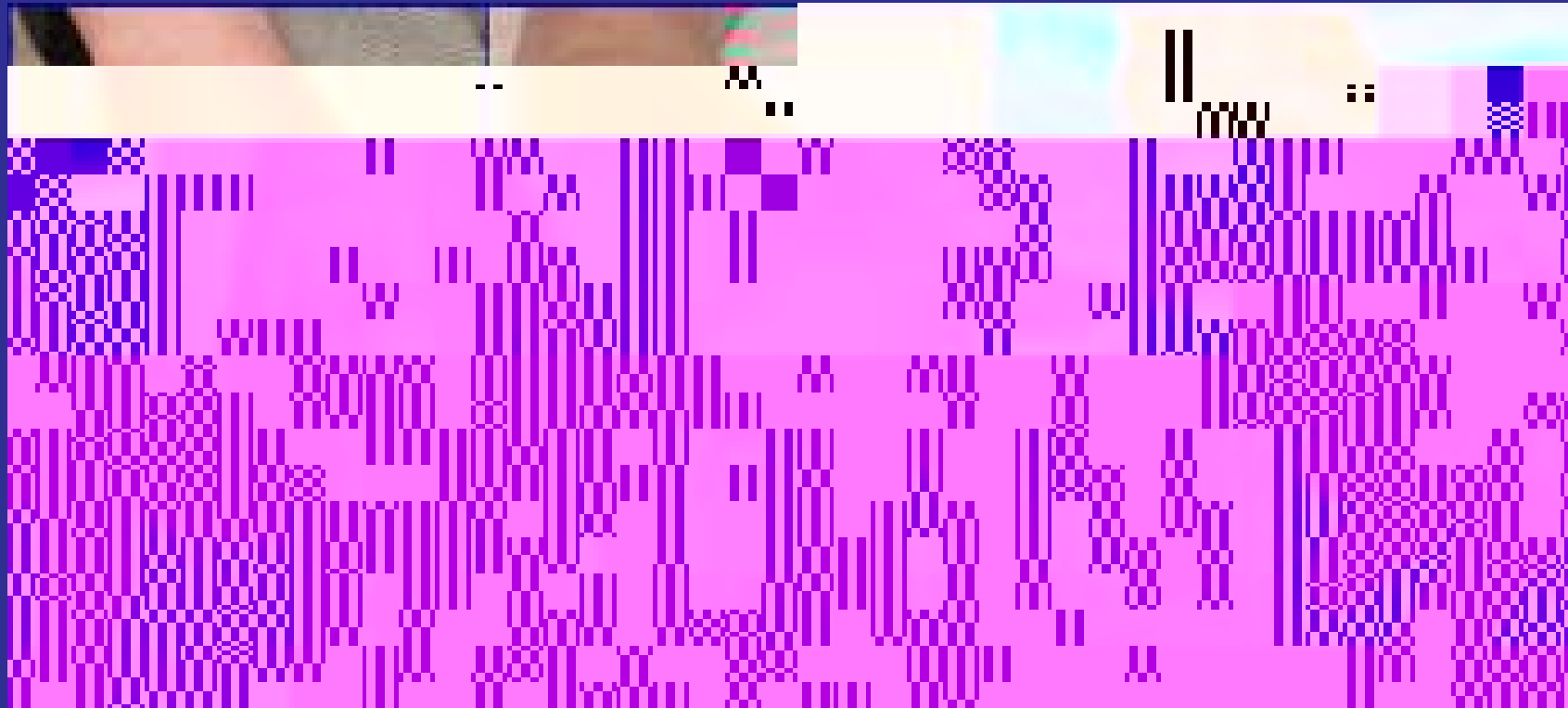


# The Value of Molecular Preemption

Early  
Rheumatoid Arthritis

Intermediate  
Rheumatoid Arthritis

Late  
Rheumatoid Arthritis



Courtesy of J. Cush, 2002

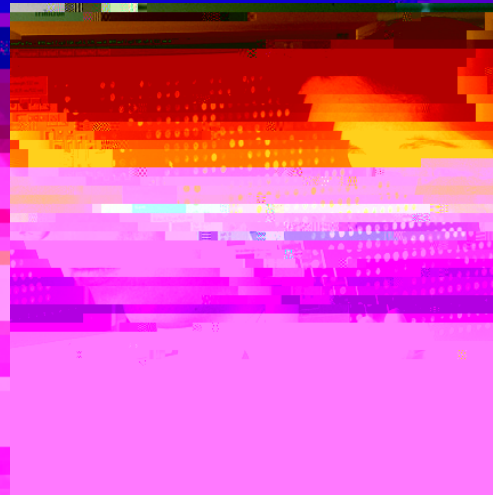
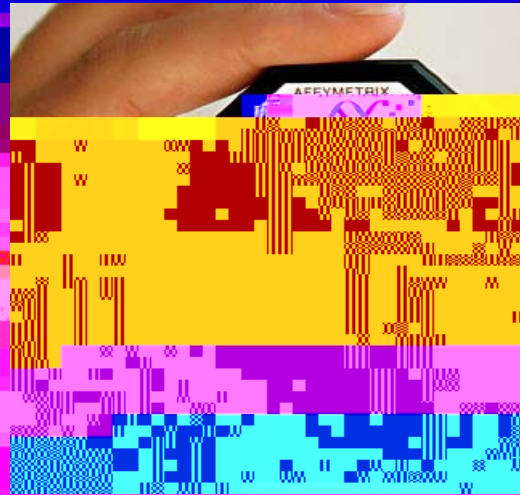






# The Future Paradigm: The 4 P's

*Transform Medicine from Curative to Preemptive*



Predictive



Personalized



Preemptive

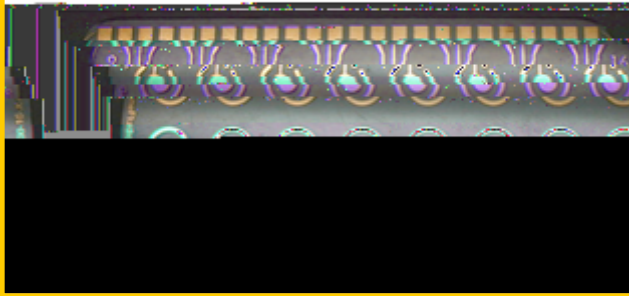


Participatory

Era of Precision Medicine

# Where Are We Today?

Biosensor Chip



Lab on a Chip



Remote Glucose Monitor



Heart Monitors

Warfarin: An anticoagulant drug used to reduce the risk of clots causing strokes or heart attacks in millions of patients

Take too little: clots, stroke

Take too much: bleeding/death

Genomic experiments revealed: two different genetic variations that predict best dose

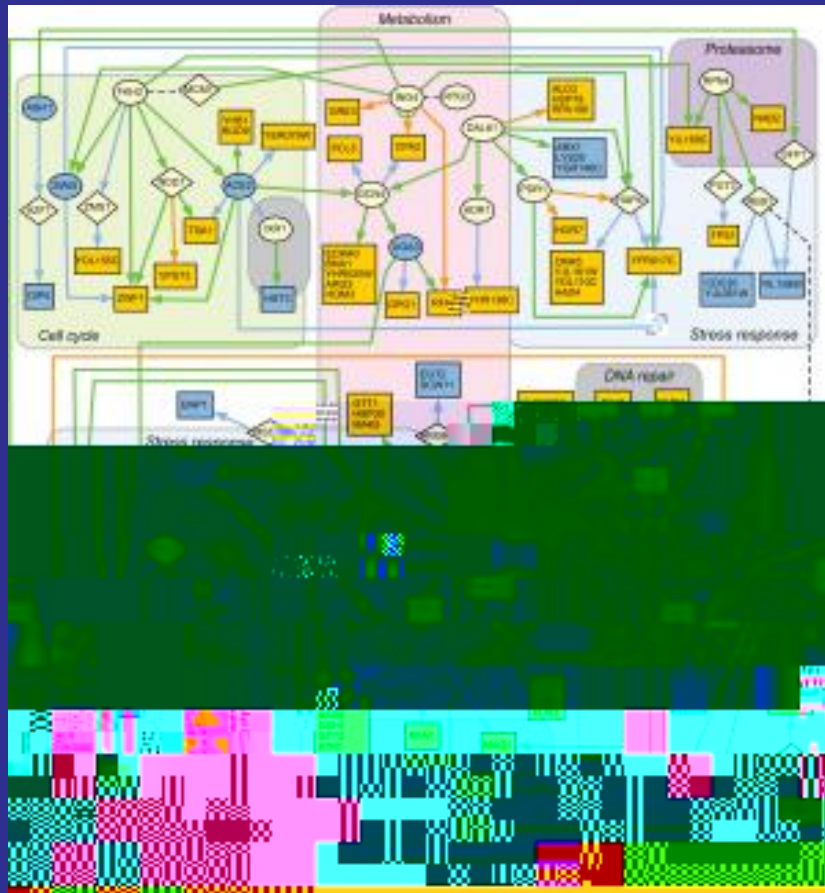






# Scientific Challenge: *Tackling Biological Complexity*

Cell's Response to Damage



Electronic Diagram



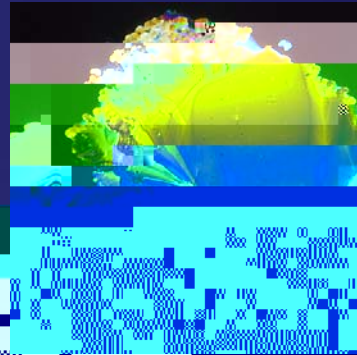
Image courtesy of UCSD











# NIH *Transforming medicine and health through discovery*

